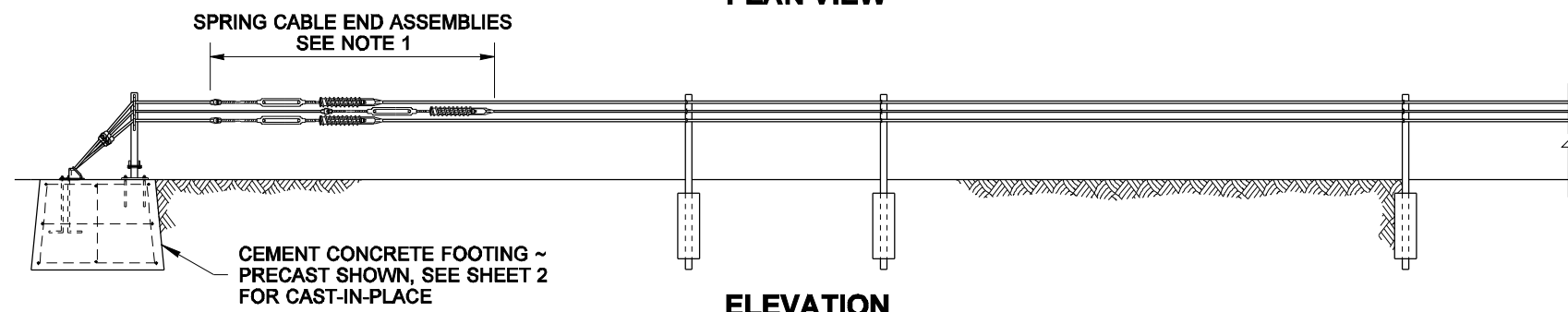


PLAN VIEW

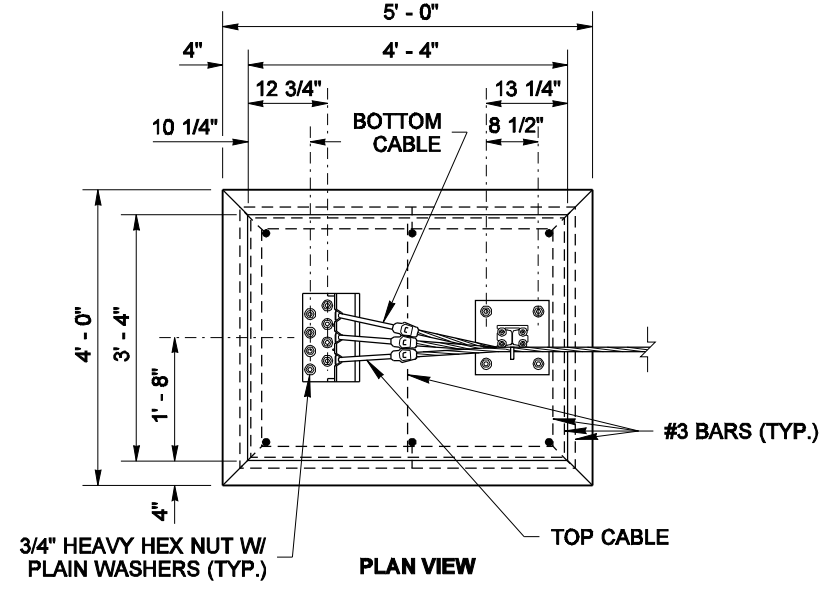
NOTES

1. Stagger Spring Cable End assemblies for clearance between units. Installation of cable end assemblies shall be as follows:
LENGTH OF CABLE RUNS:
Up to 500' ~ Use the Spring Cable End Assembly on one end, and turnbuckle only on the other end of each cable.
Over 500' to 2000' ~ Use the Spring Cable End Assembly on each end of each cable.
2. Distance from tangent of barrier run to notch for top cable on breakaway anchor angle shall be 4'.
3. Where the cable is connected to a cable socket with a wedge type connector, one wire of the wire rope shall be crimped over the base of the wedge to hold it firmly in place.

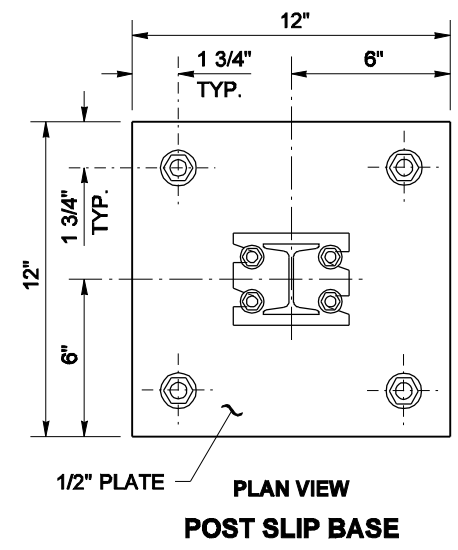


ELEVATION

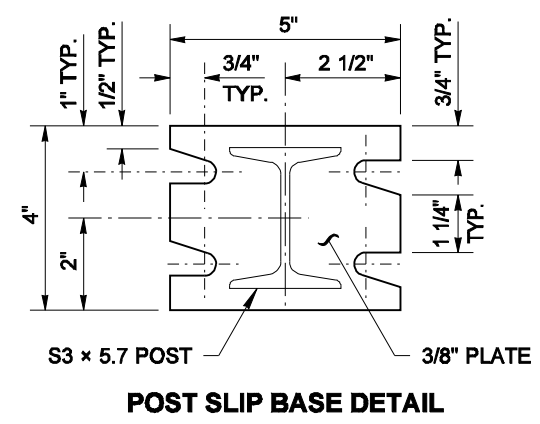
| TABLE | | | |
|---------------|--|------------------------------|------------------------|
| CABLE BARRIER | A TOP OF FOOTING TO TOP OF HIGHEST CABLE | B SLIP POST DIMENSIONS | C BETWEEN CABLES |
| TYPE 1 | 27" | S3 x 5.7 x 27 1/4" | 3" |
| TYPE 2 | 30" | S3 x 5.7 x 30 1/4" | 4 1/2" |
| TYPE 3 | 30" | S3 x 5.7 x 30 1/4" | 4 1/2" |



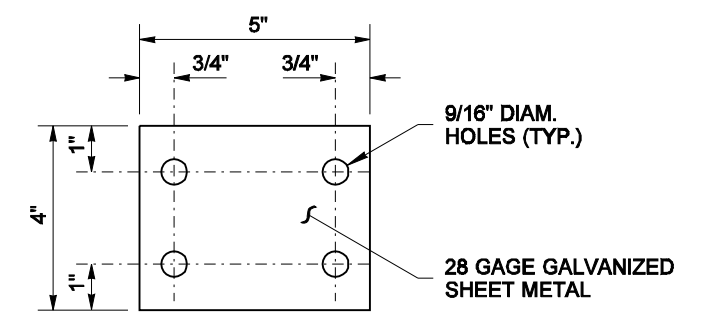
PLAN VIEW



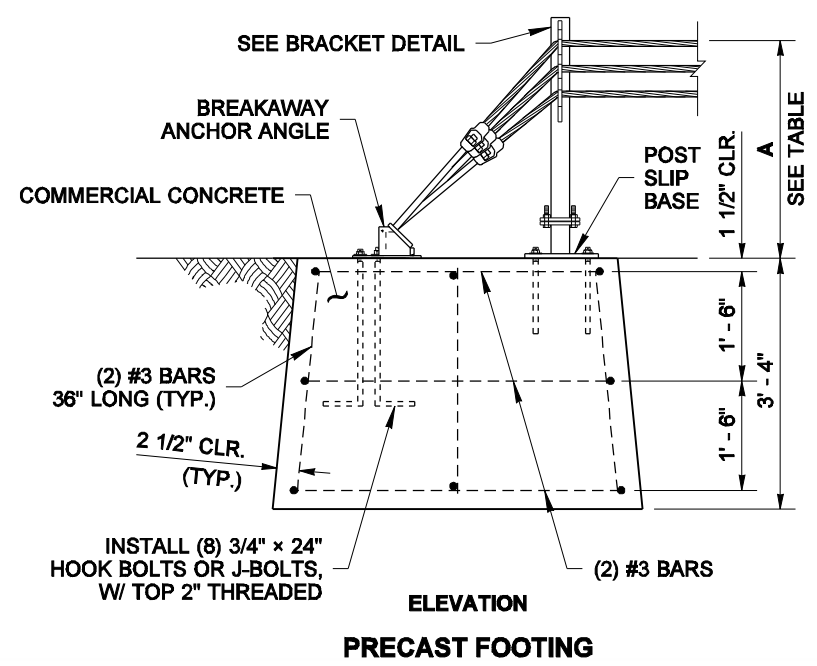
**PLAN VIEW
POST SLIP BASE**



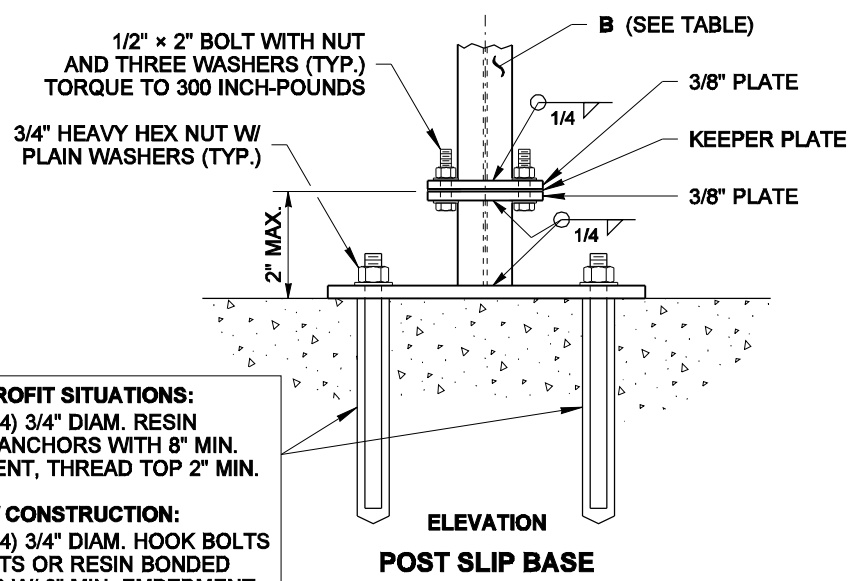
POST SLIP BASE DETAIL



KEEPER PLATE DETAIL



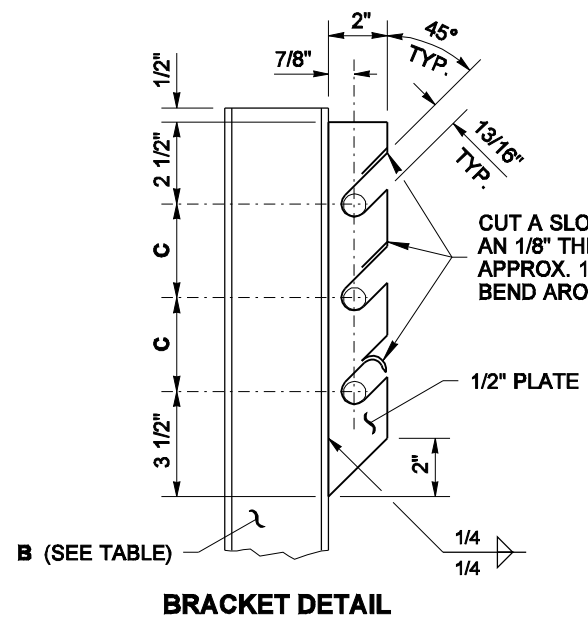
**ELEVATION
PRECAST FOOTING**



**ELEVATION
POST SLIP BASE**

FOR RETROFIT SITUATIONS:
INSTALL (4) 3/4" DIAM. RESIN BONDED ANCHORS WITH 8" MIN. EMBEDMENT, THREAD TOP 2" MIN.

FOR NEW CONSTRUCTION:
INSTALL (4) 3/4" DIAM. HOOK BOLTS OR J-BOLTS OR RESIN BONDED ANCHORS W/ 8" MIN. EMBEDMENT, THREAD TOP 2" MIN.



BRACKET DETAIL



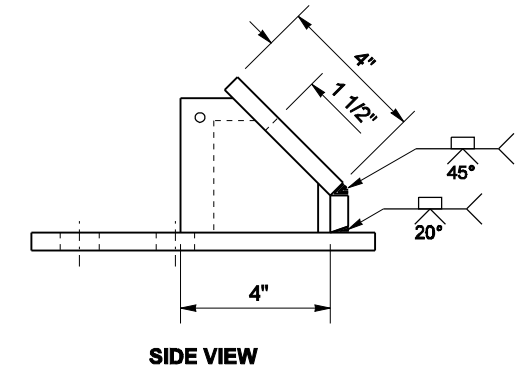
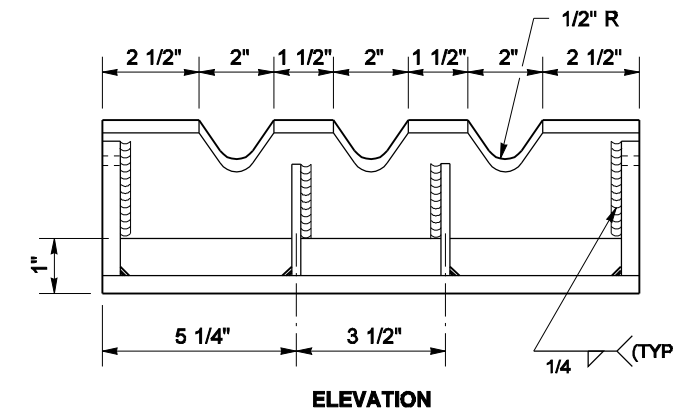
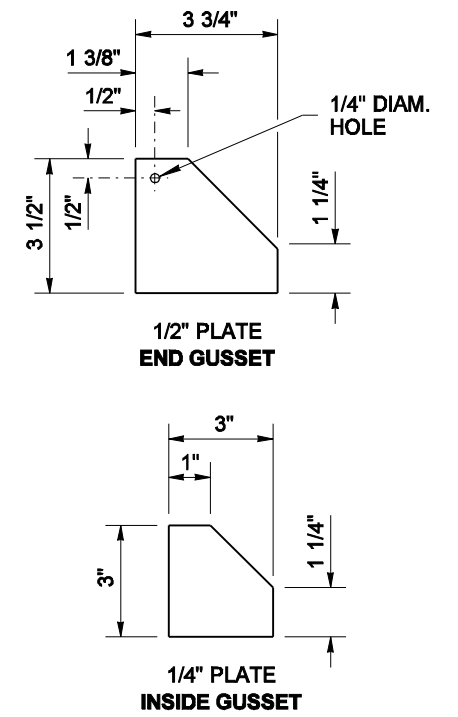
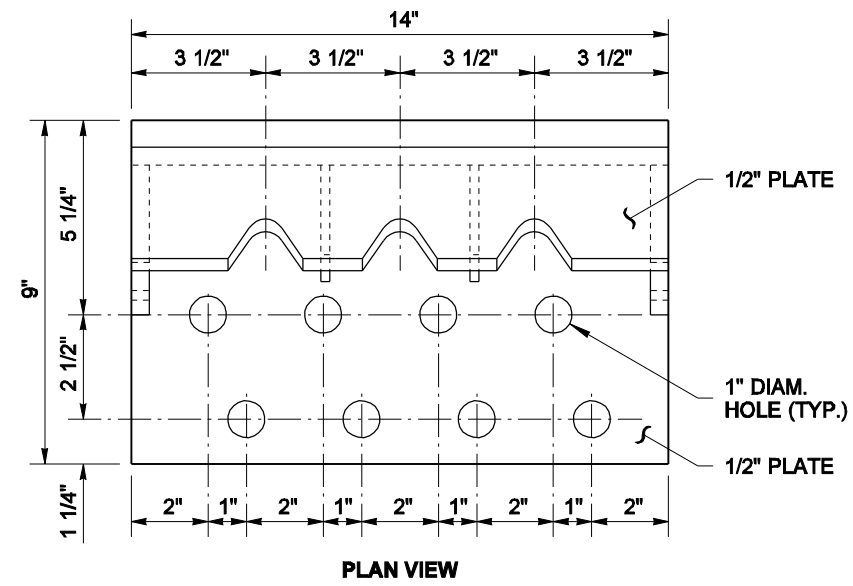
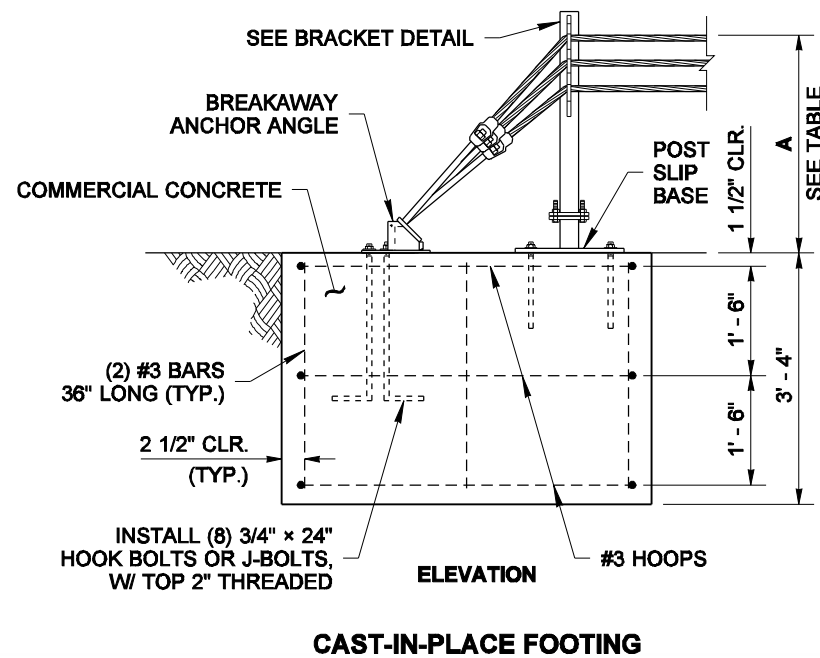
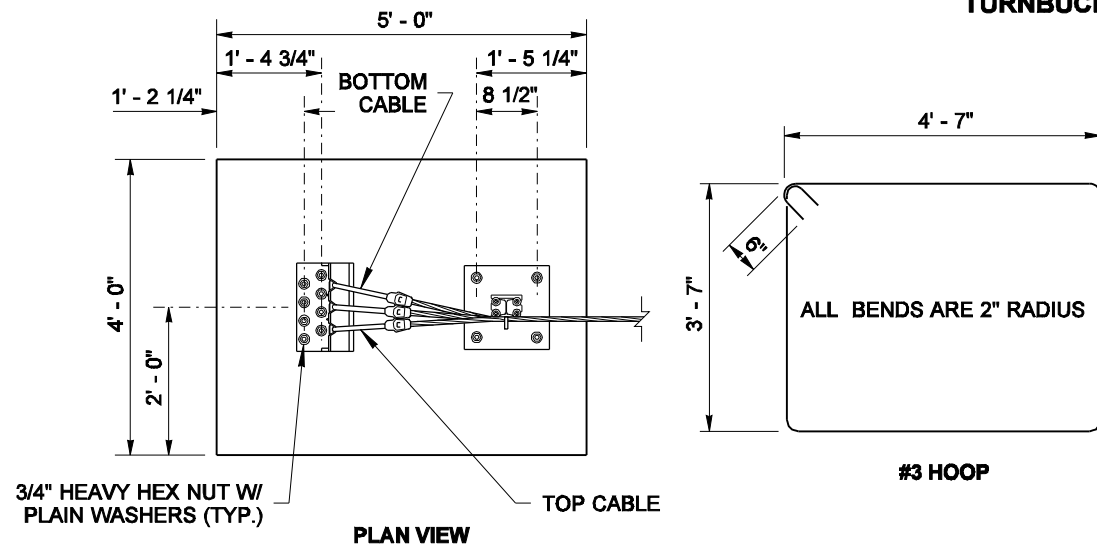
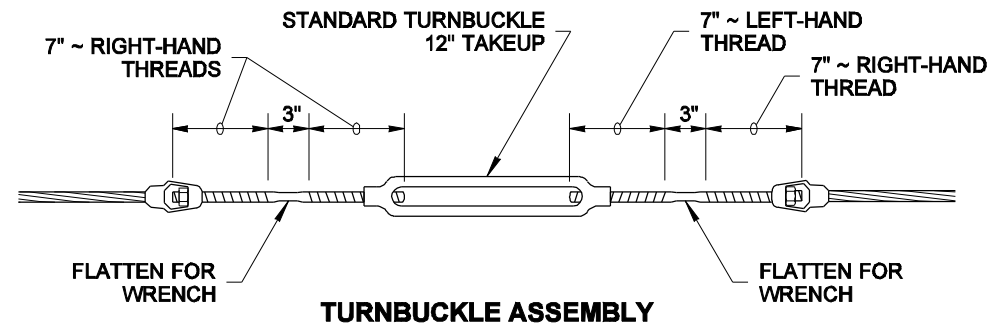
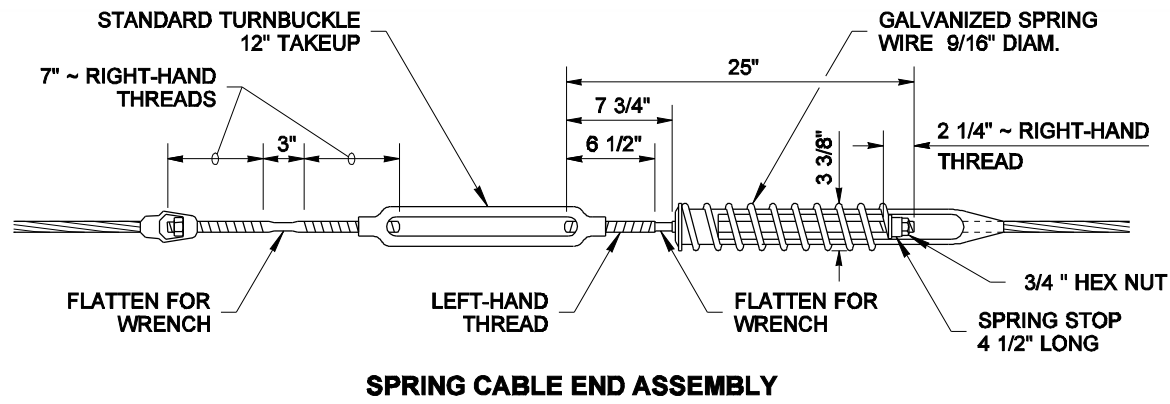
NOTE: THIS PLAN IS NOT A LEGAL ENGINEERING DOCUMENT UNLESS IT IS SIGNED AND SEALED BY AN ELECTRONIC SIGNATURE. THE ORIGINAL, SIGNED BY THE ENGINEER AND APPROVED FOR PUBLICATION, IS KEPT ON FILE AT THE WASHINGTON STATE DEPARTMENT OF TRANSPORTATION. A COPY MAY BE OBTAINED UPON REQUEST.

**CABLE BARRIER
TERMINAL
STANDARD PLAN C-11b**
SHEET 1 OF 2 SHEETS

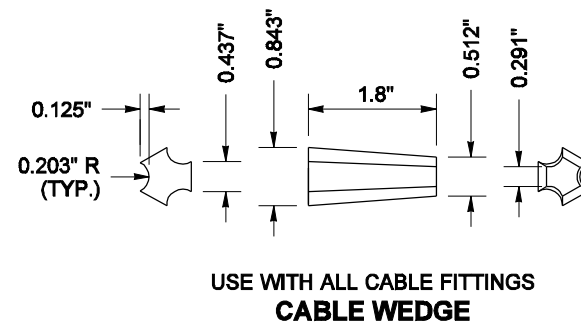
APPROVED FOR PUBLICATION
Harold J. Peterfeso 05-20-04
STATE DESIGN ENGINEER DATE
Washington State Department of Transportation

| | | |
|---------|--|----|
| 04/2004 | REV. FOUNDATION; REV. BOLT LENGTH FOR SLIP BASE. | MS |
| DATE | REVISION | BY |

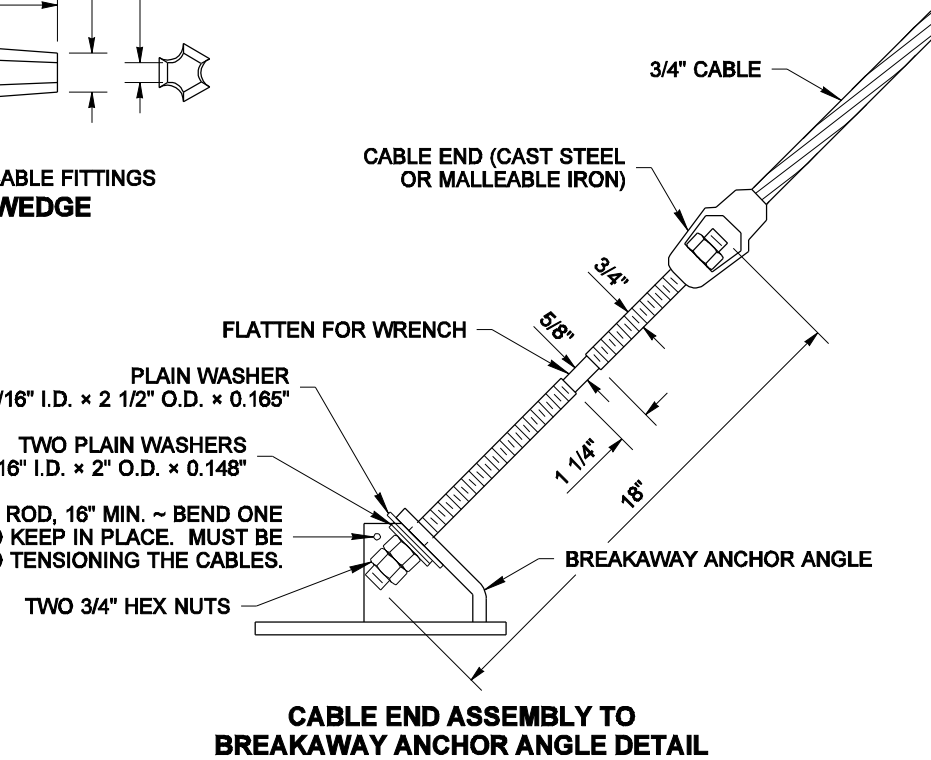
DRAWN BY: MARK SUJKA



BREAKAWAY ANCHOR ANGLE



3/16" BRASS WELDING ROD, 16" MIN. ~ BEND ONE INCH AT EACH END, TO KEEP IN PLACE. MUST BE INSTALLED PRIOR TO TENSIONING THE CABLES.



EXPIRES JULY 24, 2004

CABLE BARRIER TERMINAL
STANDARD PLAN C-11b

SHEET 2 OF 2 SHEETS

APPROVED FOR PUBLICATION

Harold J. Peterfeso 05-20-04
 STATE DESIGN ENGINEER DATE



NOTE: THIS PLAN IS NOT A LEGAL ENGINEERING DOCUMENT UNLESS IT IS ELECTRONICALLY SIGNED BY THE ENGINEER AND APPROVED FOR PUBLICATION IS KEPT ON FILE AT THE WASHINGTON STATE DEPARTMENT OF TRANSPORTATION. A COPY MAY BE OBTAINED UPON REQUEST.